



VeloTM

Flippa



2-5
Years

Max
25 kg
55 lbs



YvolutionTM

yvolution.com

Europe Head Office

Yvolve Sports Ltd

13-18 City Quay
Dublin 2
D02ED70
Ireland

support@yvolution.com

USA Office

Yvolution USA, INC.

2390 Crenshaw Blvd. #356
Torrance, CA. 90501

support@yvolution.com

UK Office

Western Avenue
Western Docks
Southampton
SO15 0HH

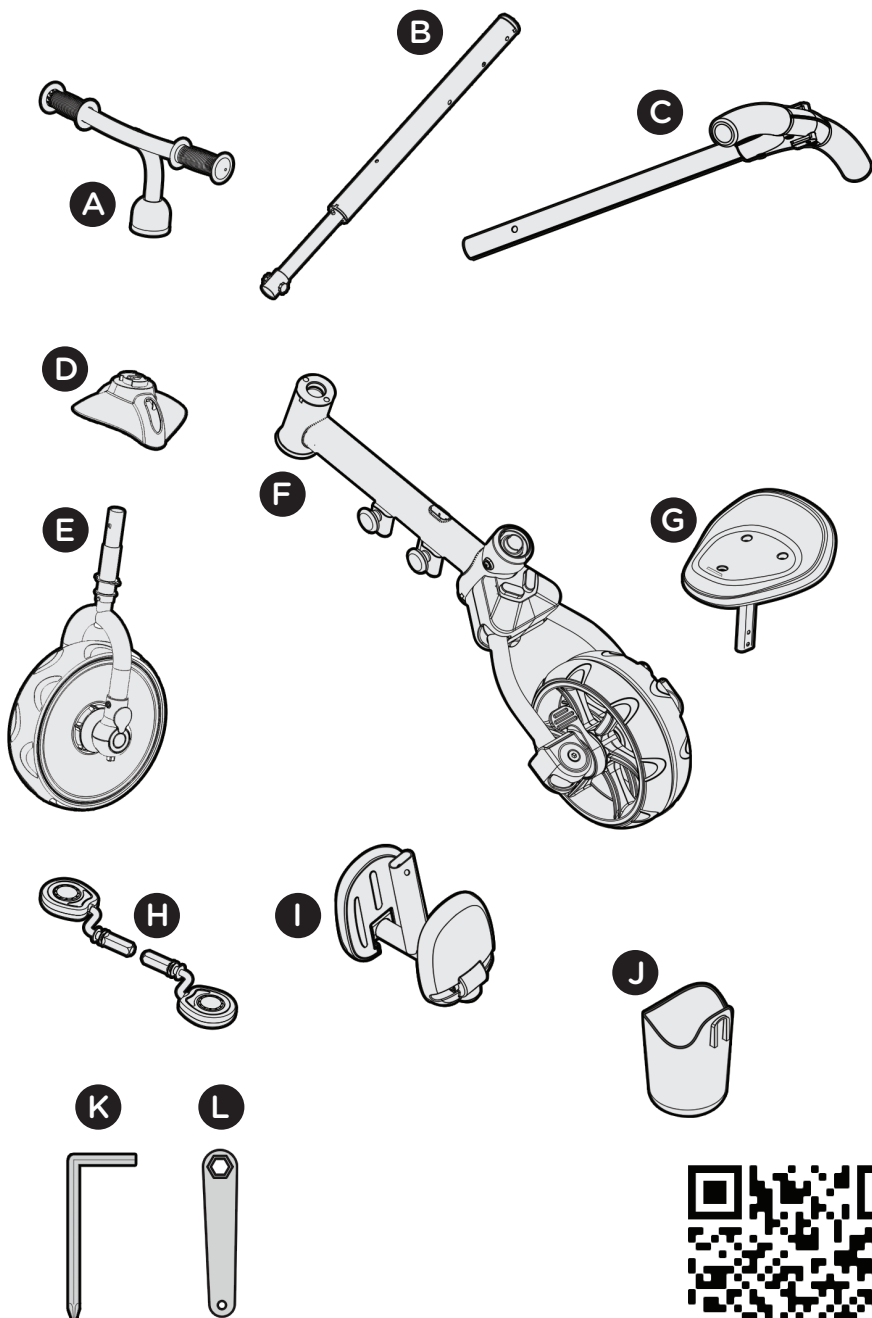
support@yvolution.com

© 2021 Yvolve Sports Ltd.
All Rights Reserved.

Made in China

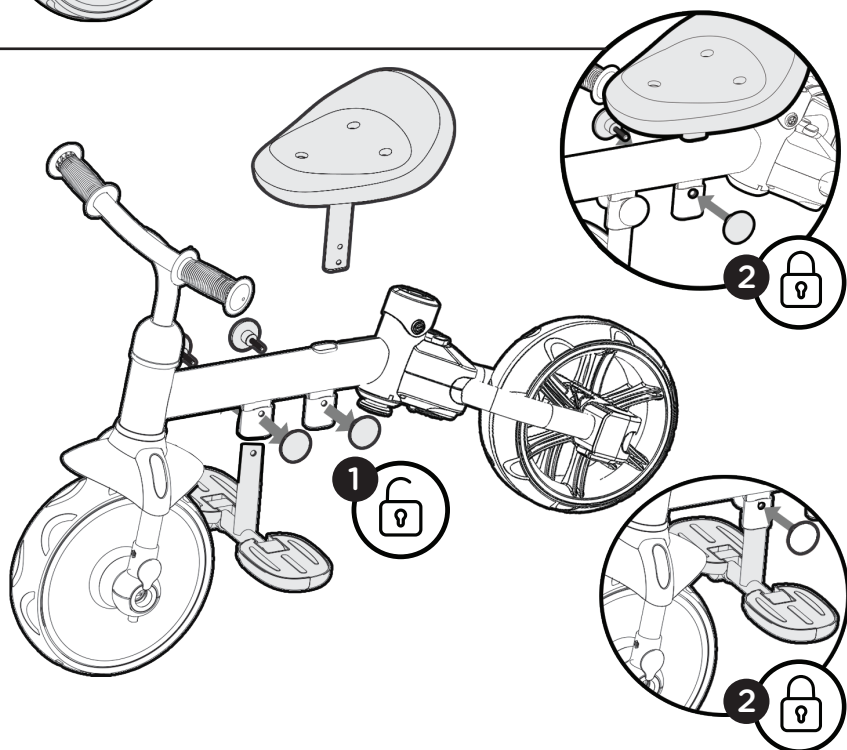
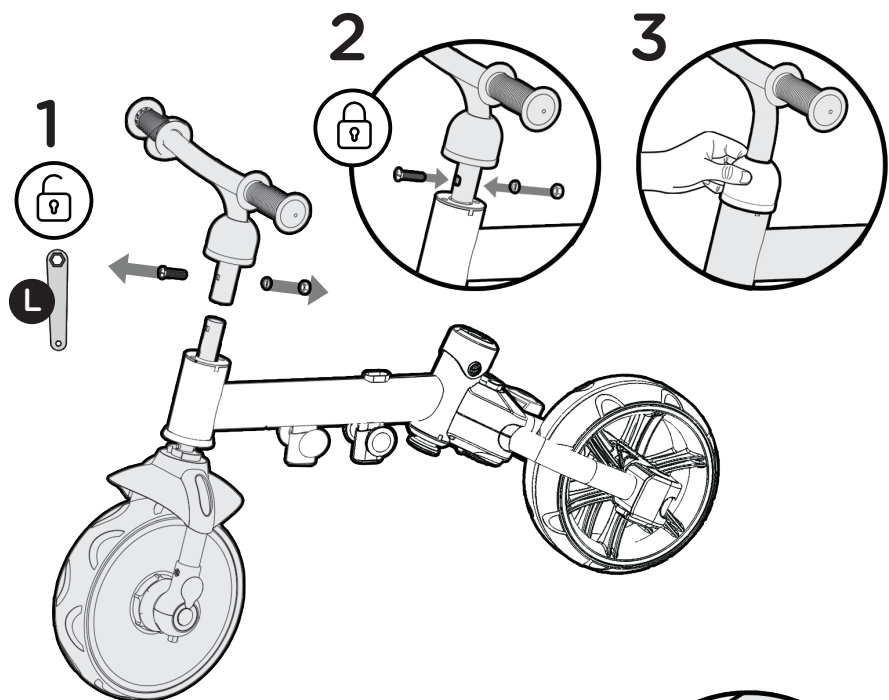


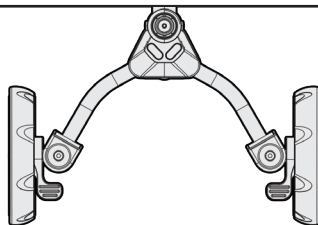
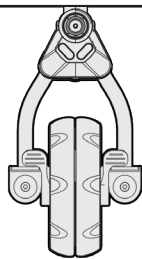
CONTENTS, INCLUDING SPECIFICATIONS AND
COLOURS, MAY VARY FROM PHOTOS DEPICTED
ON PACKAGE



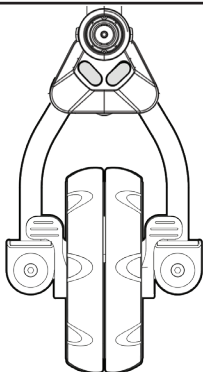
Check Youtube Video!
How To Assemble Flippa



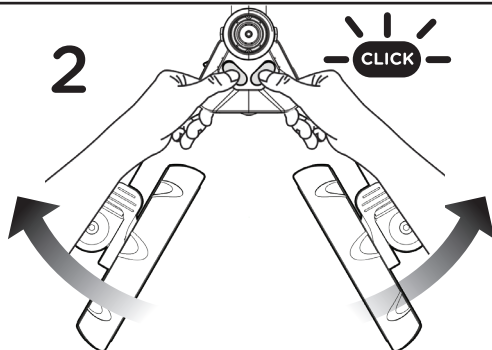




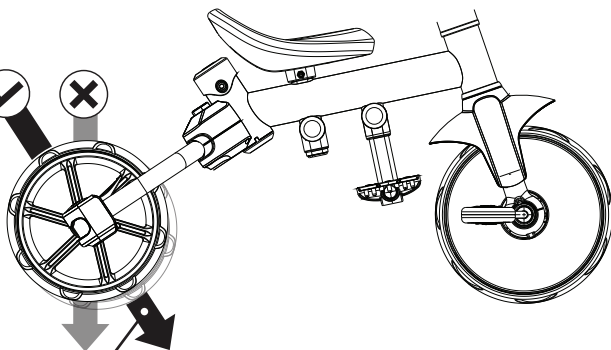
1



2



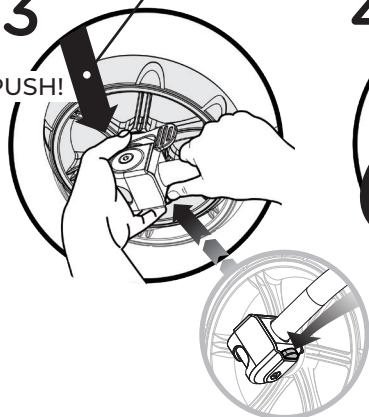
PUSH!



Check Youtube Video!
How To Assemble Flippa

3

PUSH!

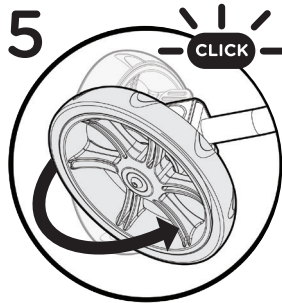


4

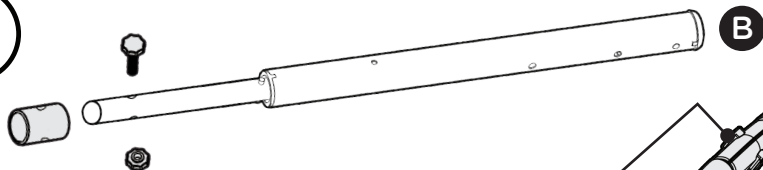


5

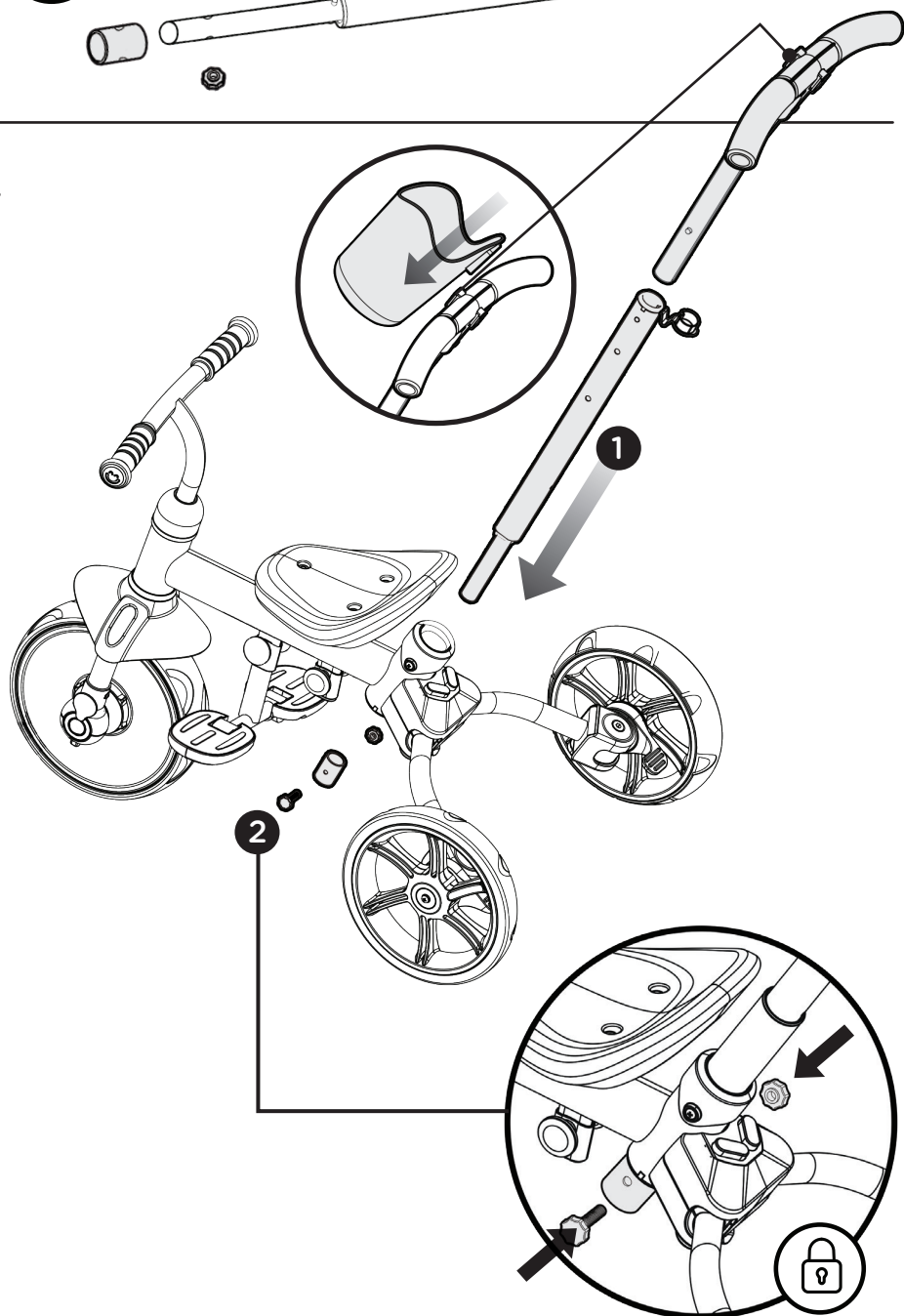
CLICK

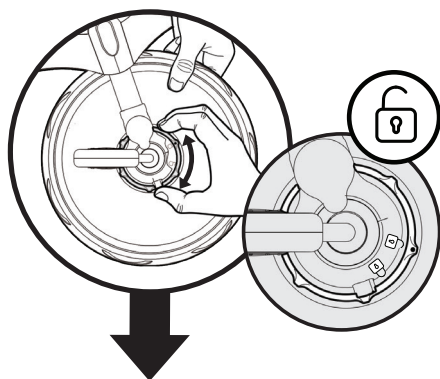
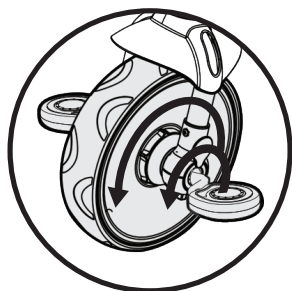
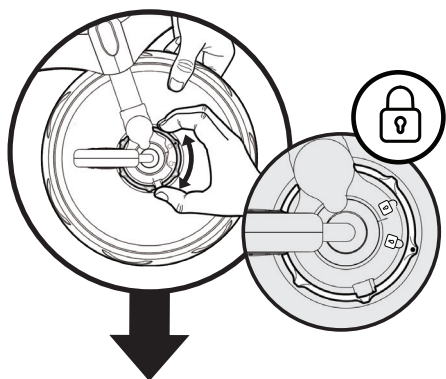
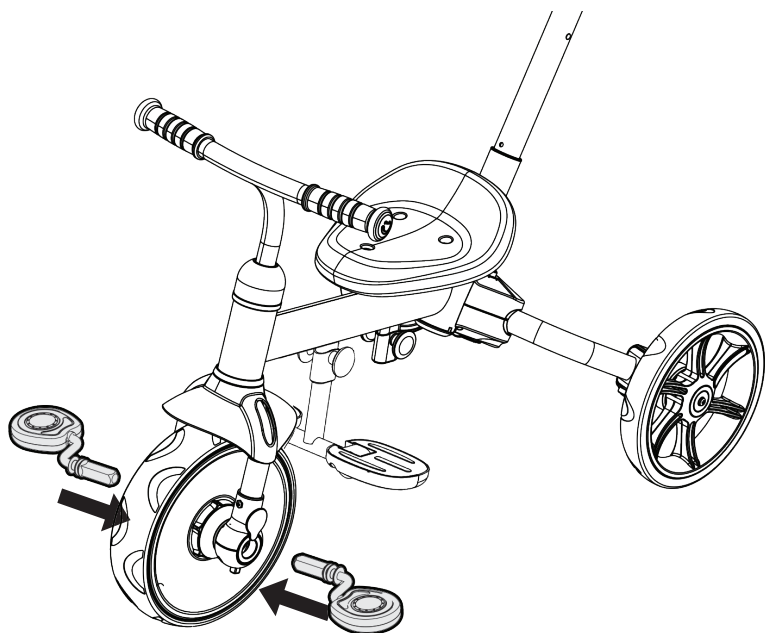


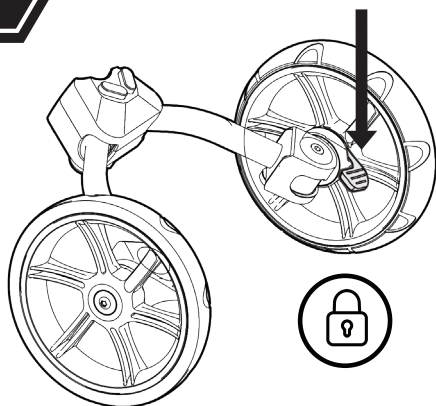
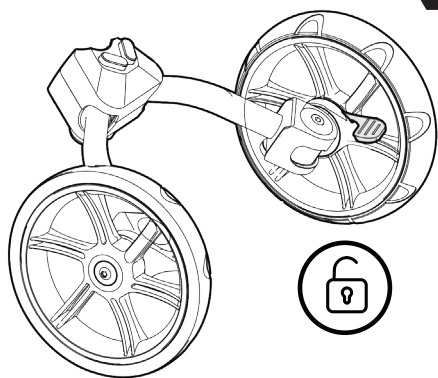
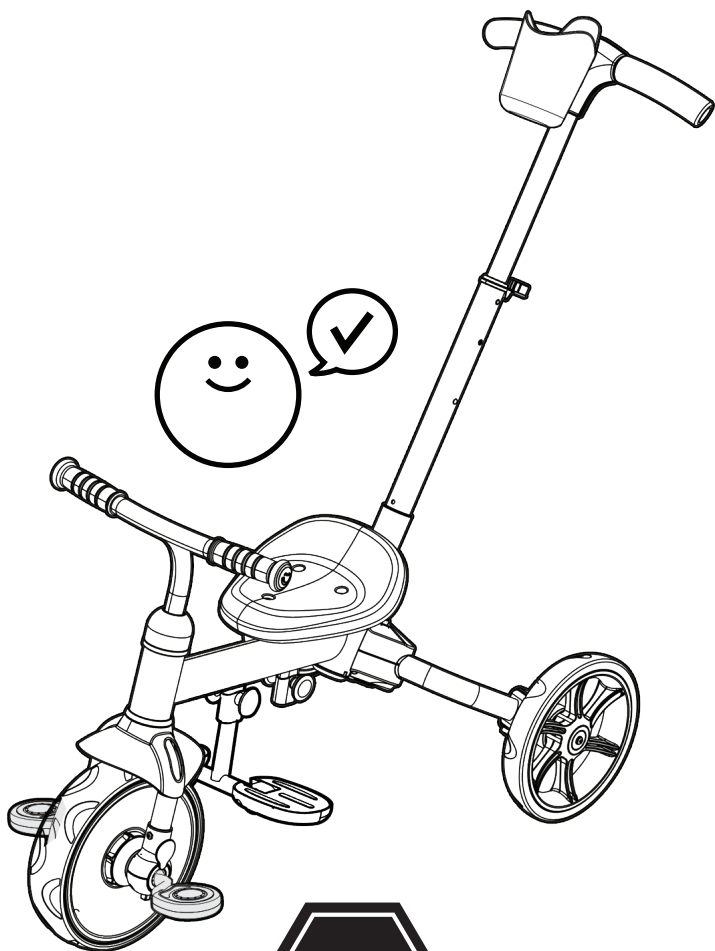
1

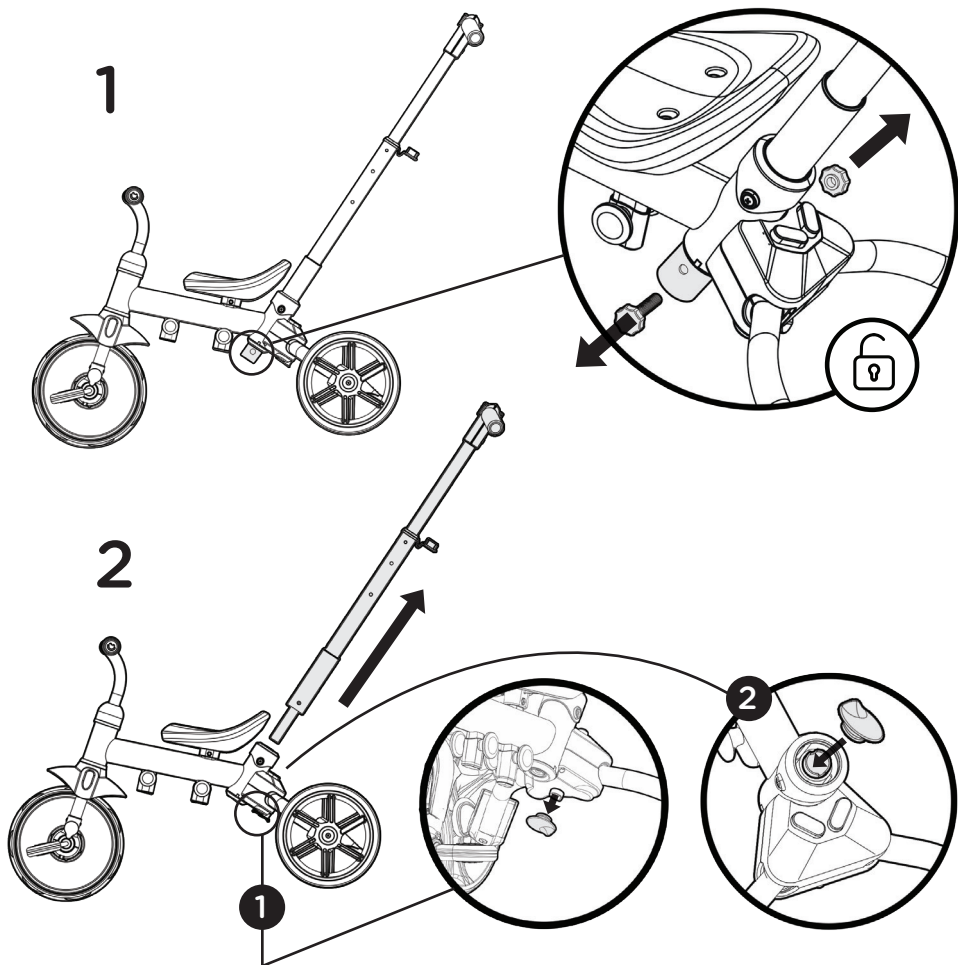
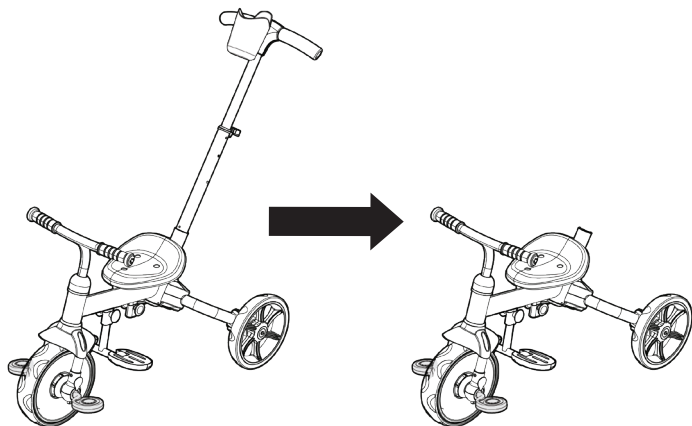


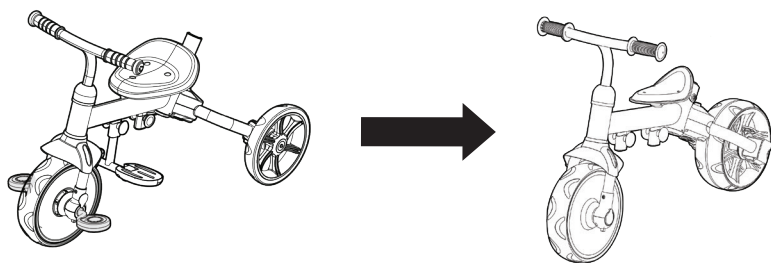
2



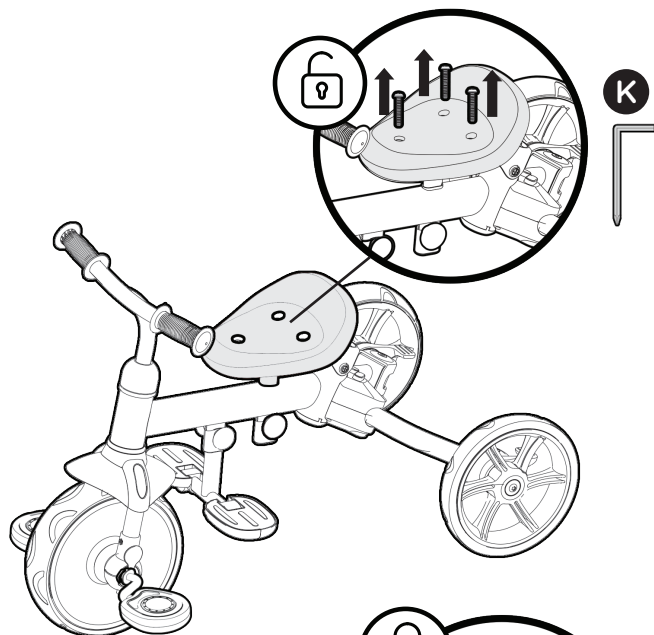




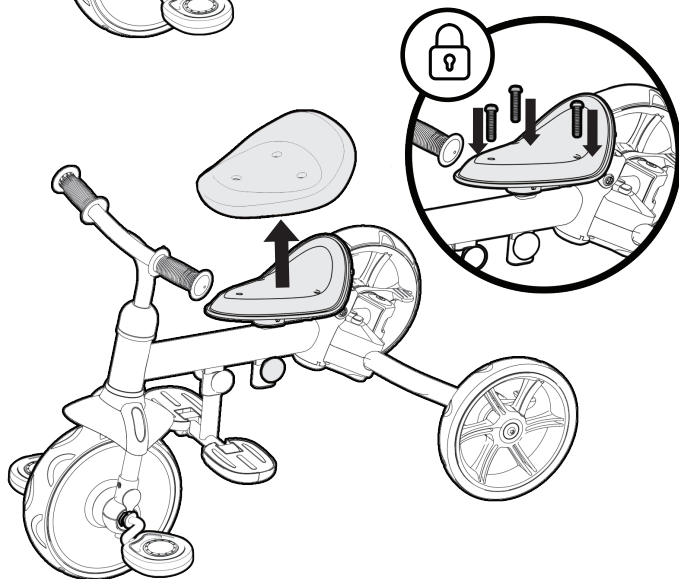




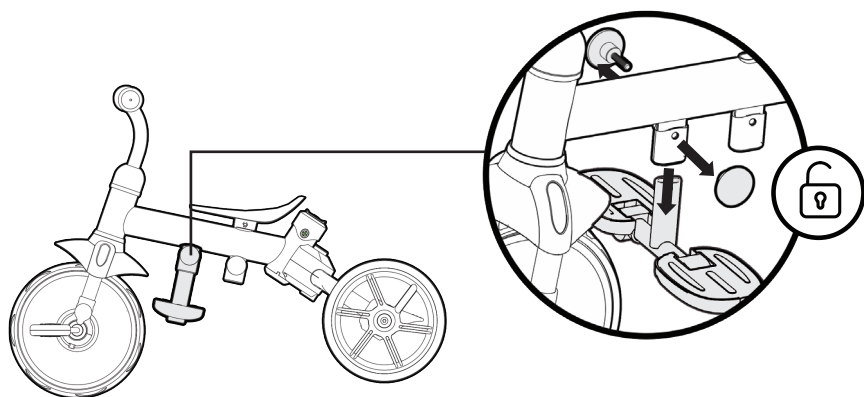
1



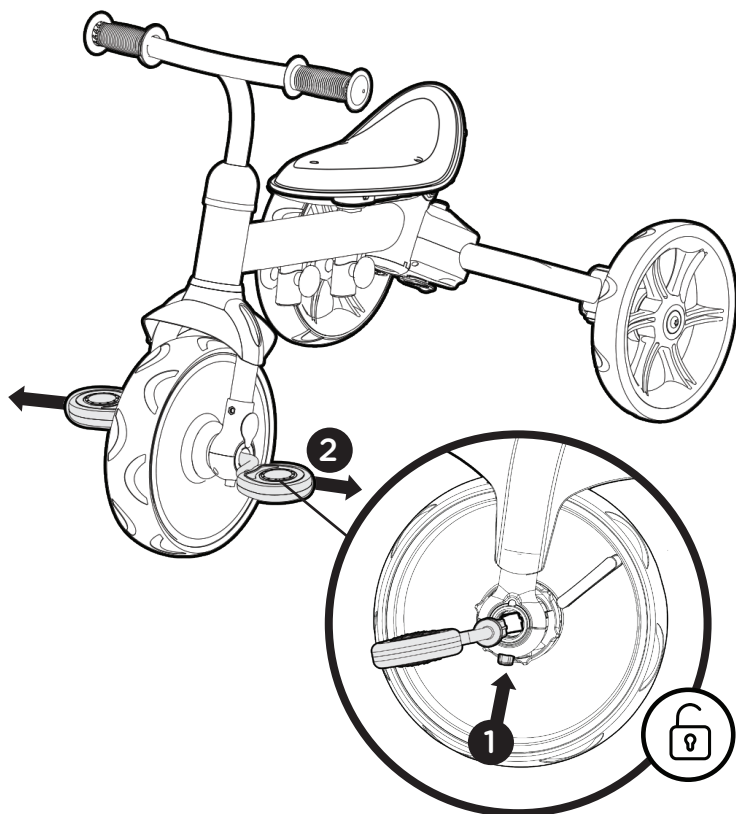
2



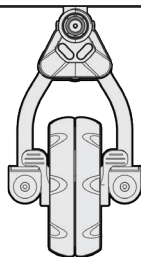
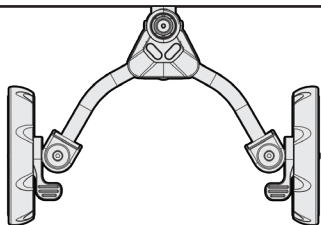
3



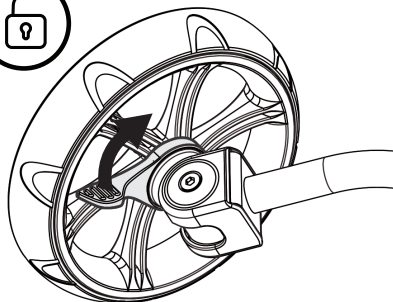
4



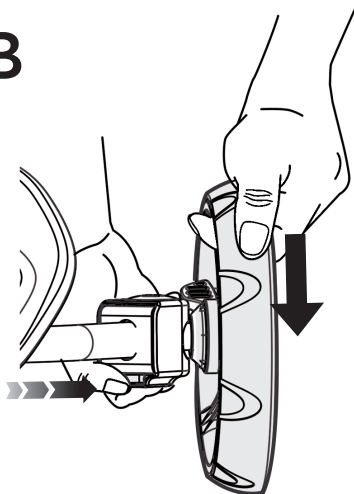
5



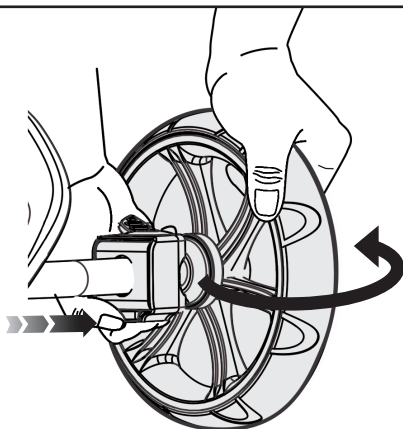
A



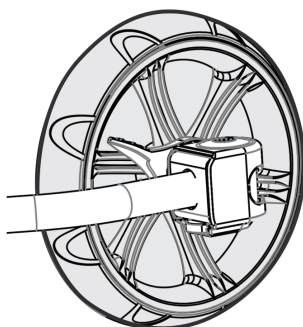
B

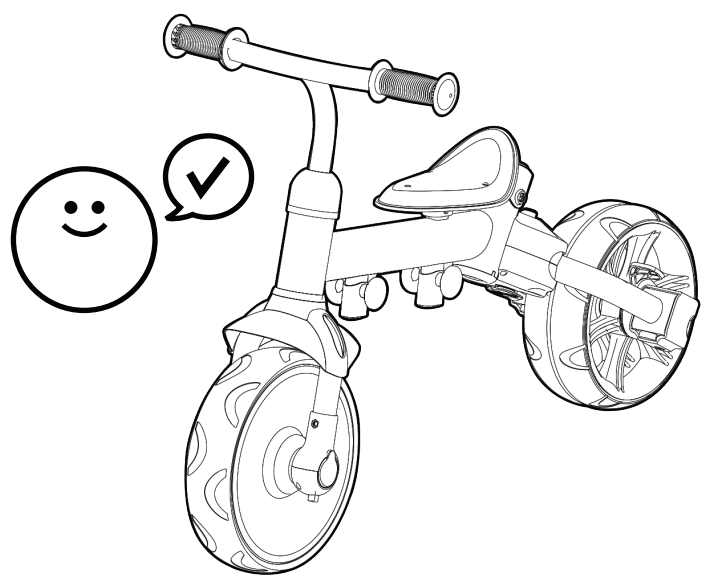
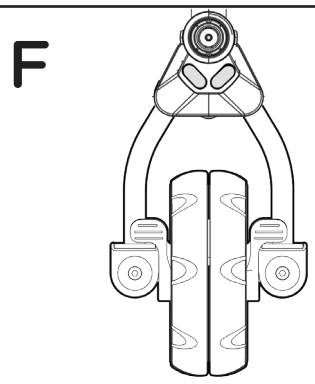
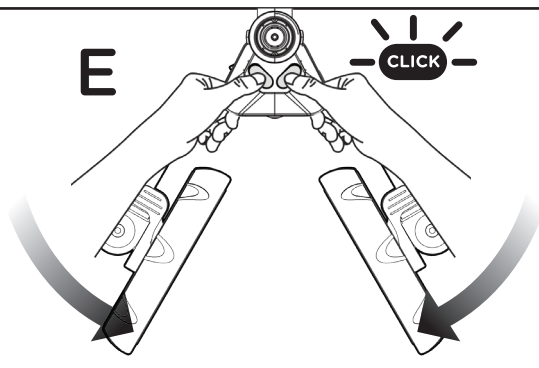


C



D







WARNING!

Adult assembly required!

TO AVOID SERIOUS INJURY: Continuous adult supervision required; never use near motor vehicles; never use near streets, swimming pools, hills, steps, or sloped driveways; Always wear shoes when using the tricycle. Never allow more than one rider.

Protective equipment should be worn. Not to be used in traffic. 25 Kg max. Adult assembly required. To be used under the direct supervision of an adult. Warning. This toy has no brake. Wear protective clothing on the head, elbows, hands and knees during use. Basic tools required for assembly. Clean with a damp sponge or cloth – do not submerge the item into water. Read these instructions before use, follow them and keep them for reference. Recommended age: 2-5 years.

1. Adult assembly required!
2. Before riding, please check that all fasteners are correctly secure.
3. Always wear shoes when riding.
4. For the child's personal safety, always use safety equipment such as Helmet, Elbow pads, Knee Pads, and Gloves.
5. Always wear a properly fitted helmet that complies with U.S. Consumer Product Safety Commission (CPSC) Standard 16 CFR 1203.
6. To be used on smooth paved surfaces without any traffic. Not for use on public roads.
7. Not to be used at dusk, at night, or at times of limited visibility and unfit weather.
8. Replace worn or broken parts immediately.
9. Only one person riding at a time.
10. Maximum weight is 25 kgs.
11. This product is for children between 2-5 years.
12. Adult assembly required. Choking hazard to children under the age of 3 years - contains small parts prior to assembly
13. The toy should be used with caution since skill is required to avoid falls or collisions causing injury to the user or third parties.
14. When removing the push handlebar, please ensure the push handlebar insertion hole is correctly covered up in order to avoid finger entrapment.
16. When converting to tricycle mode, please ensure the front wheel pedal engagement lock is switched on to allow your child to pedal the tricycle.

Maintenance:

Routinely ensure that all fasteners have not become loose. Repeated loosening and tightening of fasteners over time may decrease their effectiveness. Once assembly is complete, refrain from disassembling in order to maximise the longevity of the product.

To test the lubrication of wheel bearings, lift the product and spin each wheel. Any hindrance of spin should be corrected by applying a lithium or silicon based lubricant to the wheel bearings.

Periodically check that the height of both the seat and the handlebars are correctly positioned for your child. As your child grows, these height adjustable components should be raised accordingly.

The seat should be sufficiently high such that your child's feet can be placed flat on the ground while sitting with knees slightly bent.

WARRANTY EN/GB Yvolution warrants this product to be free from manufacturing defects for 2 years from date of purchase, if purchased within the EU. For all other territories outside the EU the warranty period is 1 year from date of purchase. There are no other warranties, express or implied. This warranty does not cover the following:

- Damage, accidental or otherwise, to the product while in the possession of the consumer and not caused by a defect in material or workmanship;
- Damage caused by incorrect assembly of the product;
- Damage caused by accident, misuse, neglect, theft, tampering with or failure to follow the care and special handling provisions in the Instructions;
- Damage caused by repairs or alterations of the product by anyone other than an authorized Yvolution dealer or Yvolution brand;
- Damage caused by normal wear and tear;
- Any other cause not arising from defects in material and workmanship;
- Product being used in a manner other than for recreational purposes;
- Product being rented or used for commercial purposes;
- Product being used by riders weighing over the maximum weight listed on the product.

Yvolution is not liable for incidental or consequential loss or damage due directly or indirectly to the use of this product. Yvolution reserves the right to repair, supply replacement parts, or replace a defective product at its discretion. Consumer should return any defective product, in the original box and with all the documents that accompany the product, to the store of purchase prior to contacting Yvolution customer service support. For your records, please save your original receipt.

Register online at:

<http://www.yvolution.com/warranty>

Email: Support@yvolution.com

Customer Service:

EU/Ireland +44 800 802 1197

US +1 855 981 7177



Yvolution™